

em-trak S100

AIS Antenna Splitter

Simplify AIS installation by using a single VHF antenna to combine AIS and VHF operations.

The em-trak S100 Splitter enables any AIS Class B device and a VHF radio to be used in conjunction with a single VHF antenna.



Zero loss Splitter

No loss is introduced into received signal maintaining the existing VHF and AIS range.



Simple Installation

The S100 enables you to use a single VHF antenna for both AIS and VHF radio use. This saves both time and money and makes installation quick and easy.



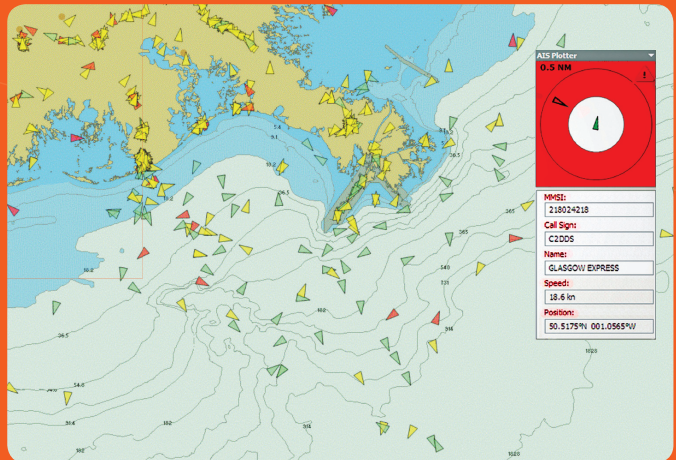
Fail-safe Operation

Guarantees priority to VHF voice and DSC radio operation in the event of a power failure.

The S100 offers exceptional value and versatility for your AIS device and on board equipment.



www.em-trak.com



Features and Specifications

- Zero loss in receive range
- Small and lightweight
- Allows AIS and VHF to share the same antenna
- High quality, engineered to last

Physical

- Overall dimensions - 120mm x 80mm x 50mm
- SO-239 socket for VHF antenna connection
- SO-239 socket for VHF radio connection
- BNC socket for AIS transponder connection

Power

- 12 to 24VDC (abs. max 9 to 32V)
- Current draw <150mA continuous @ 12V DC

User Interfaces

- Green LED for power indication
- Amber LED for VHF TX indication
- Amber LED for AIS TX indication

RF Performance

- Insertion loss (AIS or VHF RX paths) 0dB
- Insertion loss (AIS or VHF TX paths) < 1dB
- Power handling, VHF port, 25W
- Power handling, AIS port, 12.5W
- Operating frequency range 156.000 - 163.425MHz

Installation requirements

- Existing marine band VHF antenna
- Class B AIS Transceiver
- 12 – 24VDC power supply

Supplied with:

- 2m power cable
- 1m AIS interface cable
- 1m VHF interface cable
- User manual and quick start guide
- Mounting screws

Product Order Information

- Product Name: em-trak S100
- Product Code: 416-0013

The AIS S100 is an aid to navigation and must not be relied upon to provide accurate navigation information. AIS is not a replacement for vigilant human lookouts and other navigation aids such as Radar. The performance of the S100 may be seriously impaired if not installed as instructed in the user manual, or due to other factors such as weather and or nearby transmitting devices. Compatibility with other systems may vary and is reliant on the third party systems recognizing the standard outputs from the S100.

Your em-trak dealer:



www.em-trak.com

Head Office:
em-trak Marine Electronics Limited
Forum 3,
Parkway, Solent Business Park,
Whiteley, Fareham,
Southampton PO15 7FH
United Kingdom
T +44 (0)1489 611662
F +44 (0)1489 611612
enquiries@em-trak.com

Regional Office:
em-trak Marine Electronics Limited
470 Atlantic Avenue,
4th floor,
Boston,
02210
USA
T +1 617 273 8395
F +1 617 273 8001
enquiries@em-trak.com