

CLONING SOFTWARE CS-M73

- ◆ This cloning software is designed to perform data entry, settings, and cloning for the IC-M73 and IC-M73EURO VHF MARINE TRANSCEIVERS.
- ◆ The CS-M73 has a Help file describing functions and operations.

System requirements

To use this cloning software, the following computer system and cables are required:

PC

- Microsoft® Windows® XP (32bit), Microsoft® Windows Vista® (32/64bit), Microsoft® Windows® 7 (32/64bit), or Microsoft® Windows® 8 (32/64bit)* Operating System (OS)
- * Except for the Microsoft® Windows® 8 RT.
- A USB port

Others

Optional OPC-478UC CLONING CABLE + OPC-922 CLONING ADAPTER CABLE.

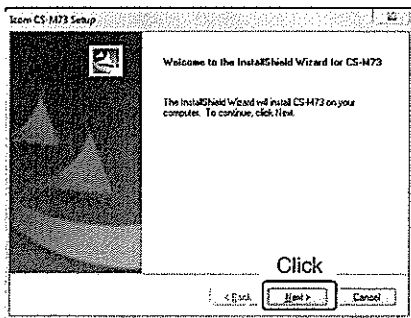
NOTE:

- These instructions are based on using Microsoft® Windows® 7.
- Before using the OPC-478UC cloning cable, you must install the USB driver, which is supplied with the cable. See the OPC-478UC instruction manual for details.
- To use the OPC-478UC's USB driver with a 64 bit OS, you can use only Microsoft® Windows® 7.

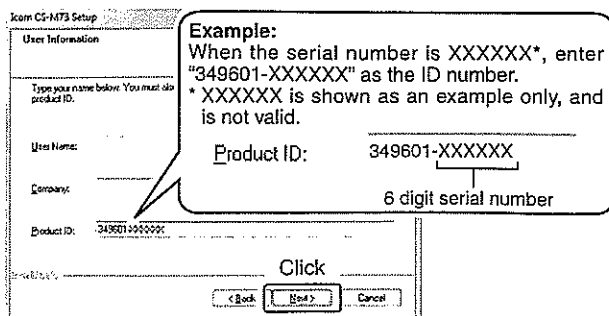
Software installation

When installing the software, log on as the administrator.

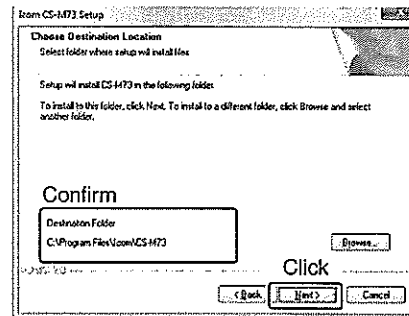
- 1 Make sure Windows has completed its start-up, and no other applications are running.
- 2 Insert the CD into a CD drive.
- 3 Double-click the "setup.exe" contained in the CD.
 - If "User Account Control" appears, click [Yes] to continue.
- 4 "Welcome to the InstallShield Wizard for CS-M73" appears, and then click [Next>].



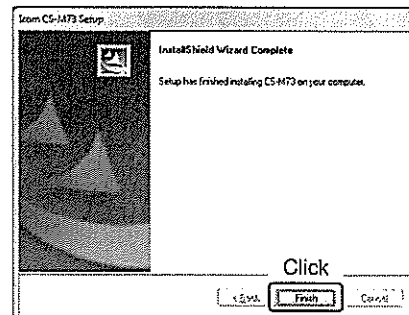
- 5 "User Information" appears. Type your name, your company name (optional) and the product ID number in the following manner, and then click [Next >].
 - Product ID number: 349601-(6 digit serial number)
- Please check the serial number on the CD.



- 6 "Choose Destination Location" appears, and then click [Next>].
 - If desired, click [Browse...] to select another destination folder before clicking [Next >].



- 7 After the installation is completed, "InstallShield Wizard Complete" appears, and then click [Finish].

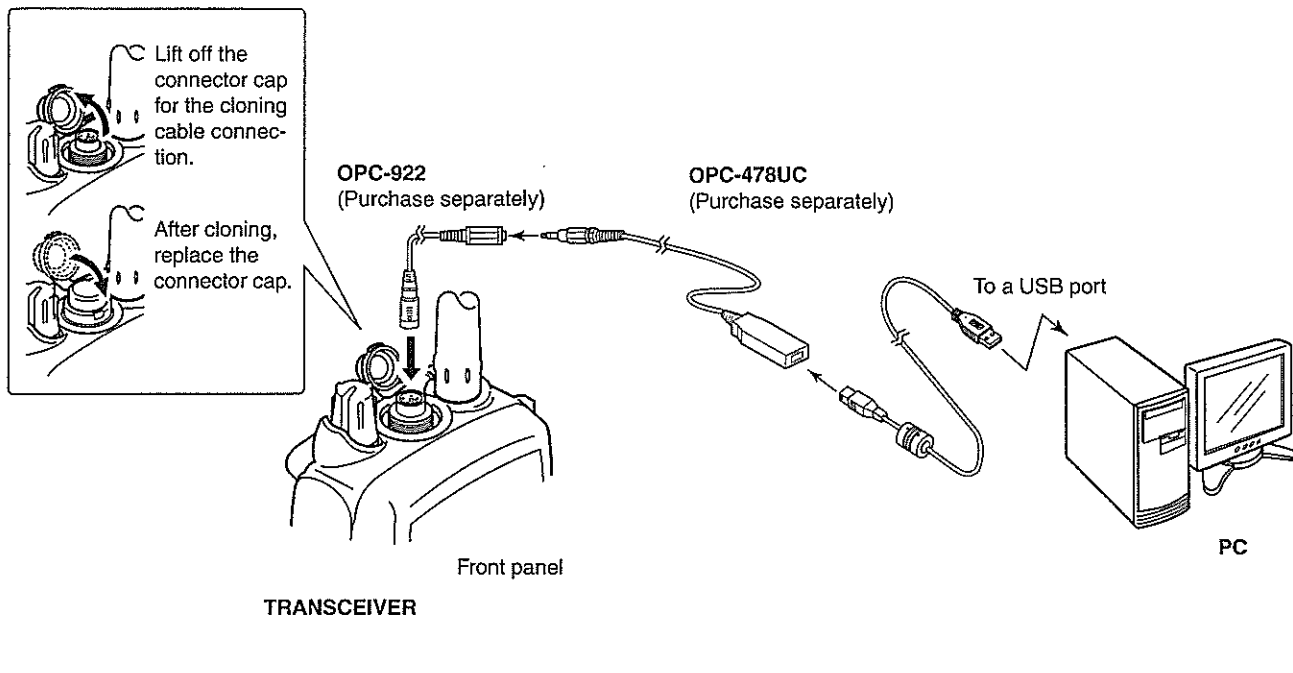


- 8 Eject the CD.
- 9 A program group 'CS-M73' appears on the program menu, and the shortcut icon appears on the desktop.
 - You can uninstall the cloning software using "Uninstall a program" in the Windows Control Panel.

■ Connection


All cloning operations are performed from the PC's keyboard.
First, make sure the transceiver power is OFF.

- ① Connect the cables, as illustrated below.
- ② Rotate [PWR/VOL] on the transceiver to turn ON the power.



■ Programming information

- To avoid data loss, you should download all the transceiver's data before entering or editing parameters using the cloning software, even when the transceiver is factory fresh.

Click , or [Clone] in the top menu of the cloning software, and then select "Read <- TR" to start downloading.

- While downloading or uploading cloning data, **NEVER** turn OFF the transceiver or the PC, and **NEVER** disconnect the USB cable or adapter cable. Otherwise, the data could be lost or deleted.

Please refer to the Help file of the cloning software for assistance with the functions or settings.

To open the Help file, click [Help] in the top menu of the cloning software and select "Contents," or simply push the [F1] key of the PC's keyboard.

Icom, Icom Inc. and the Icom logo are registered trademarks of Icom Incorporated (Japan) in Japan, the United States, the United Kingdom, Germany, France, Spain, Russia and/or other countries.
Microsoft, Windows and Windows Vista are registered trademarks of Microsoft Corporation in the United States and/or other countries.
All other products or brands are registered trademarks or trademarks of their respective holders.